

Manual

KIDSFLEX

PRO



Table of contents

1	GENERAL INFORMATION	4
1.1	Foreword	4
1.2	Intended use and indication	5
1.3	Notes	5
1.4	Declaration of conformity	5
1.5	Warranty conditions	5
1.6	Service and repairs	6
1.7	Training in use	6
1.8	Installation in the car	6
1.9	Securing with the car's 3-point seat belt	8
1.10	Declaration of conformity	10
1.11	Approval/compatibility with regard to combination with standard car seats	11
1.12	Contraindications	11
2	SAFETY INSTRUCTIONS	12
3	HANDLING OF THE BASIC MODEL	13
3.1	Adjusting the headrest	13
3.2	Adjusting the seat depth	13
3.3	Adjusting the back angle	14
3.4	Adjusting the shoulder guides	14
3.5	Adjusting the thoracic pads	15
3.6	Handling the adjustable backrest	16
4	USING THE OPTIONAL ACCESSORIES	17

Table of contents

4.1	Installation in the car – with ISOFIX	17
4.2	Support and safety pads	19
4.3	abduction wedge	20
4.4	Seat angle adjustment	20
4.5	Rotation adapter	21
4.6	Leg guide adjustment	22
4.7	Footrest / foot support roller	22
4.8	Protective mat	23
4.9	Connecting strap for shoulder straps	23
5	WARRANTY	25
6	LABELLING	26
7	MAINTENANCE & CARE	28
7.1	Removing the cover	28
8	TECHNICAL	29

Error! Use the Home tab to apply Überschrift 1 to the text that you want to appear here Error! Use

1 General information

1.1 Foreword

You have chosen the KIDSLFEX-PRO car seat and have received a high-quality product from our company. We would like to thank you for your trust in us.

To ensure that you enjoy this product for a long time and that it makes your everyday life easier, we have provided these instructions. They show you how to use the product correctly and easily, as well as how to care for and maintain it. To avoid damage due to operating errors and to ensure optimal use, please read the following instructions carefully. If you have any questions or problems, please contact your dealer.

We wish you trouble-free use and hope that our product meets your expectations.

We reserve the right to make technical changes to the version described in this manual.

Before installing the device in your vehicle and using it for the first time, please read and follow the installation instructions on pages 4 - 6. Please ensure that the user manual remains with the product so that it is available to anyone who uses the seat.

Yours sincerely, HERNIK GmbH

Error! Use the Home tab to apply Überschrift 1 to the text that you want to appear here Error! Use

1.2 Intended use and indication

The KIDSFLEX-PRO was developed for the transport of children with special needs (GMFCS 3-5; e.g. pronounced muscular hypotonia with lack of head and trunk control) in vehicles. Children with poor head and trunk control (e.g. infantile cerebral palsy, muscular dystrophy, hypotonia) can be supported in their posture by means of individually positionable chest pads and special cushions, ensuring safe transport.

Important optional accessories allow specific aspects to be addressed, e.g. the seat angle or the installation of a stable abduction wedge or footrest. For more information, see the chapter on 4 .

1.3 Notes

The KIDSFLEX-PRO rehabilitation child car seat is designed for use in the back seat of a car and requires an existing, functioning 3-point seat belt. The seat can be installed behind either the front passenger seat or the driver's seat.

In addition to your car's 3-point seat belt, the child car seat is equipped with a 5-point chest and shoulder harness that provides your child with additional support.

1.4 Declaration of conformity

HERNIK GmbH declares under its sole responsibility that the IPAI child car seat complies with the essential requirements (Annex 1 of Directive 93/42 EEC). The product is marked with the CE mark in accordance with the above-mentioned directive.

1.5 Warranty conditions

A warranty can only be provided if the product is used under the specified conditions and for the intended purposes. The manufacturer is not liable for damage caused by components and spare parts that have not been approved by the manufacturer.

Error! Use the Home tab to apply Überschrift 1 to the text that you want to appear here Error! Use

1.6 Service and repairs

Service and repairs on the KIDSFLEX-PRO may only be carried out by specialist dealers. If you encounter any problems, please contact your local specialist dealer. Only original spare parts will be used for repairs.

1.7 Training in use

The car seat is delivered fully assembled. Upon delivery, the specialist retailer will instruct the user in the use of the device with the aid of the instructions for use. The specialist retailer should install the car seat in the car together with the user and, if available, adjust the Isofix bracket or clamp bracket.

When installing the car seat, it is best to hold it with one hand at the front centre and the other at the top side. In order to achieve the optimum seating position, it is necessary to adjust the car seat individually to the child's circumstances. This should always be done by the specialist dealer.

Please note that an ISOFIX adapter is not mandatory, as it is not relevant to safety.

1.8 Installation in the car

Place the child seat on the vehicle seat. Ensure that the backrest is flat against the backrest of the vehicle seat.

If the seat is reclined, this is not possible. In this case, make sure that the seat is as close as possible to the backrest.

Tip! If the headrest of the vehicle seat is in the way, remove it.



Error! Use the Home tab to apply Überschrift 1 to the text that you want to appear here Error! Use

Error! Use the Home tab to apply Überschrift 1 to the text that you want to appear here Error! Use

1.9 Securing with the car's 3-point seat belt

In order to absorb the enormous forces generated in an accident, the KIDSFLEX-PRO must be secured with the vehicle's three-point seat belt.

An ISOFIX connection alone is not sufficient.

1. Place your child in the child seat.
2. Pull out the vehicle seat belt and guide it (in front of your child) to the buckle.

CAUTION! Make sure that the vehicle seat belt is not twisted, as this will prevent the restraint system from providing full protection.

3. Lock the belt buckle tongue into the vehicle buckle with a CLICK.
4. Place the diagonal belt and lap belt on the side of the vehicle buckle into the dark green belt guide on the vehicle seat.
5. Place the lap belt on the other side of the seat cushion into the dark green belt guide as well.

CAUTION! The lap belt must run as low as possible over your child's hips on both sides.

6. Insert the diagonal belt into the dark green belt holder under the headrest until it is completely and untwisted in the belt holder.
7. Ensure that the diagonal belt runs over your child's collarbone and does not touch their neck.

Before each journey, check that...

- the child seat is securely fastened,
- the lap belt runs through the dark green belt guides on both sides of the vehicle seat,
- the diagonal belt on the side of the buckle also runs through the dark green belt guide of the car seat,

Error! Use the Home tab to apply Überschrift 1 to the text that you want to appear here Error! Use

- the diagonal belt runs through the dark green belt guide on the headrest,
- the diagonal strap runs diagonally towards the back,
- the straps are taut and not twisted.



Error! Use the Home tab to apply Überschrift 1 to the text that you want to appear here Error! Use

1.10 Declaration of conformity



Gewerbering 8
83543 Rott am Inn
info@hernik.de
www.hernik.de
+49 8035-9580448
+49 8035-9580446

DECLARATION OF CONFORMITY

Manufacturer: HERNIK GmbH
Address: Gewerbering 8 83543 Rott am Inn Deutschland
SNR: DE-MF-000011257
Product: car seat for children with disabilities
Type: Kidsflex Pro 1 / 2



UDI-PI	Bezeichnung	Artikelnummer
4260675480620	KIDSFLEX-PRO 1, grau-schwarz	360000-D1
4260675480637	KIDSFLEX-PRO 1, rot-schwarz	360000-D2
4260675480644	KIDSFLEX-PRO 2, grau-schwarz	370000-D1
4260675480651	KIDSFLEX-PRO 2, rot-schwarz	370000-D2

Klassifizierung Med. Dev.: Es handelt sich um ein medizinisches Produkt der Klasse I gemäß den Klassifizierungsregeln in Anhang VIII

Classification: this is a medical device of class I according to the classification rules in Annex VIII

• I, the signer, declare under sole responsibility that the above product complies with the essential requirements of the following guidelines and standards (Annex 1 of MDR (EU) 2017/745). The conformity assessment was carried out in accordance with Annex IV of the MDR (EU) 2017/745. The product is marked with the CE mark according to the above mentioned guideline.

- Annex 1 of MDR (EU) 2017/745
- ECE-R 129-04

Rott am Inn, 01.12.2025

Andrés Moncayo



place, date

Name

signature

Error! Use the Home tab to apply Überschrift 1 to the text that you want to appear here Error! Use

1.11 Approval/compatibility with regard to combination with standard child car seats

The KIDSFLEX-PRO is an approved child car seat including all accessories in accordance with ECE R129/04. Individual parts and accessories of the KIDSFLEX-PRO are not approved for use in combination with other commercially available child car seats. Any modification could invalidate the approval of the KIDSFLEX-PRO as well as that of the commercially available child car seat.

1.12 Contraindications

There are no known contraindications.

Error! Use the Home tab to apply Überschrift 1 to the text that you want to appear here Error! Use

2 Safety

- Before use, the components must be checked to ensure they are in perfect working order and condition.
- Your child's safety can only be guaranteed if the seat is installed correctly and the child is securely fastened in.
- The straps must be tightened without twisting.
- The 3-point safety belt must be threaded through the designated belt guides and should fit snugly around the seat.
- Please check:
 - A) that the safety belt is securely positioned in the belt guide
 - B) that the belt buckles are properly fastened
 - C) that no fabrics are caught
- Make sure that there are no solid objects such as pins, belt buckles, etc. between the child and the seat belt. This could cause injuries in the event of an accident.
- Explain to your child how important it is to be properly secured and that the position of the belts must not be changed. They should not pull on the belts or open the buckles.
- Do not make any changes to the car seat, as this could compromise your child's safety.
- The car seat must not be damaged by moving parts in the car or by doors.
- Never leave your child alone in the child seat.
- Inform your passengers how to remove your child from the seat after an accident.
- After an accident, the entire child car seat must be replaced.

Error! Use the Home tab to apply Überschrift 1 to the text that you want to appear here Error! Use

3 Handling of the basic model

3.1 Adjusting the headrest

Open the zip on the headrest cover. Loosen the screws on the back plate.

You can now adjust the headrest to the desired width. Now tighten the screws again.

To adjust the height, please refer to section 3.6 "Handling the adjustable backrest".

3.2 Adjusting the seat depth ()

First loosen the Velcro pad in the lower front area of the seat plate. Then loosen both screws on the right and left. You can now adjust the seat plate to the desired depth.

Then tighten the screws again.



Error! Use the Home tab to apply Überschrift 1 to the text that you want to appear here Error! Use

3.3 Adjusting the backrest angle

The backrest angle can be adjusted continuously and locked in any position. This ensures that the car seat is stable in any position. Open the two quick-release fasteners and move the backrest to the desired position. Then close the quick-release levers to fix the angle.



3.4 Adjusting the shoulder guide pads

Loosen the screws on the shoulder guide pads on the back plate of the seat. You can now adjust the shoulder pads to the desired width. Then tighten the screws again.

To adjust the height, please refer to section 3.6 "Handling the adjustable backrest".



Error! Use the Home tab to apply Überschrift 1 to the text that you want to appear here Error! Use

3.5 Adjusting the thoracic pads

Loosen the screws on the thoracic pads on the back plate of the seat. You can now adjust the thoracic pads to the desired width. Then tighten the screws again.

To adjust the height, please refer to section 3.6 "Handling the adjustable backrest".



Error! Use the Home tab to apply Überschrift 1 to the text that you want to appear here Error! Use

3.6 Handling the adjustable backrest

The newly designed backrest can be adjusted telescopically, so that the position of the headrest, shoulder straps, shoulder guide pads and thoracic pads changes simultaneously.

First, loosen the Velcro padding (1) on both sides of the seat. Then loosen the two screws on the right and left of the back plate (2). You can now adjust the backrest to the desired height. Then secure the screws and the padding again with Velcro.

If necessary, you can use parts of the back cushion from the rear of the seat to extend the back cushion.



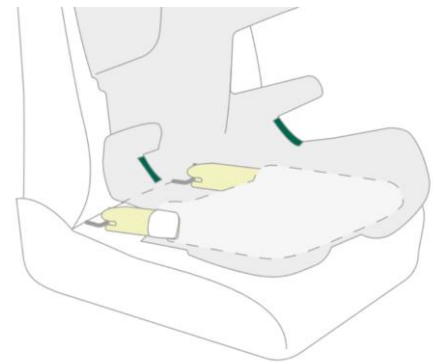
Error! Use the Home tab to apply Überschrift 1 to the text that you want to appear here Error! Use

4 Use of optional accessories

4.1 Installation in the car – with ISOFIX

Ask the technician to demonstrate how to install the seat when you receive and adjust the car seat.

The KIDSFLEX-PRO is securely installed in your vehicle using the ISOFIX locking arms. Your child is then secured with the vehicle's 3-point seat belt.



TIP! The ISOFIX attachment points are located between the seat and the backrest of the vehicle seat.

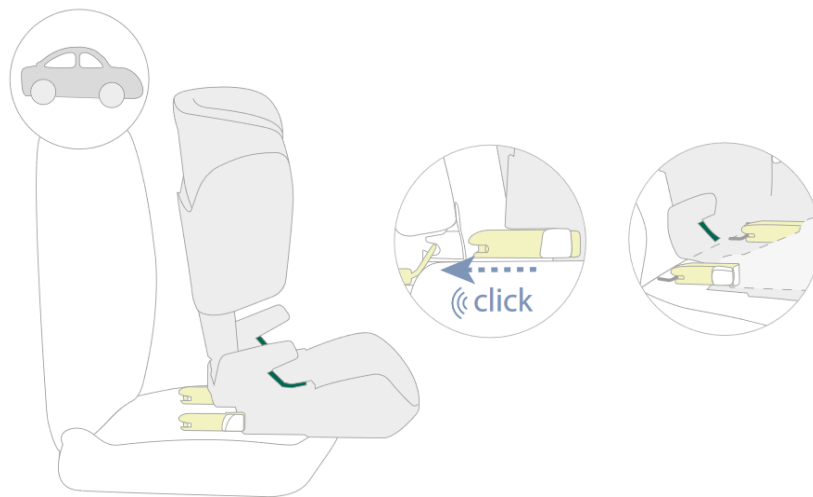


1. Move the headrest of the vehicle seat to its highest position.
2. Hold down the ISOFIX adjustment lever (see picture) and push the ISOFIX locking arms all the way out using the red cord.
3. Press the locking button and the red release button on both sides of the seat together. This ensures that both hooks on the ISOFIX locking arms are open and ready for use.



Error! Use the Home tab to apply Überschrift 1 to the text that you want to appear here Error! Use

4. Place the child seat in the direction of travel on an approved vehicle seat. Ensure that the backrest is flat against the backrest of the vehicle seat.
5. Position the two ISOFIX locking arms directly in front of the two insertion aids.
6. Push both ISOFIX locking arms into the insertion aids until the ISOFIX locking arms click into place on both sides.



7. Hold down the ISOFIX adjustment button and slide the child seat back as far as possible.
8. Wiggle the child seat to ensure that it is securely fastened.

Error! Use the Home tab to apply Überschrift 1 to the text that you want to appear here Error! Use

4.2 Support and safety pads

Installation:

1. When the seat is delivered, ask to be shown how to install and adjust it.
2. Attach the support and safety cushion to the mounting brackets after you have placed your child in the seat and fastened the seatbelt.
3. Your child's arms should rest on the table, resulting in an upright sitting position. This supports the upper body.
4. Be careful to avoid the danger of toys that may be on the cushion. Do not use hard, solid or even sharp-edged objects!



The mounting brackets can be adjusted in height. To do this, loosen the two screws and fasten them in the desired mounting holes.

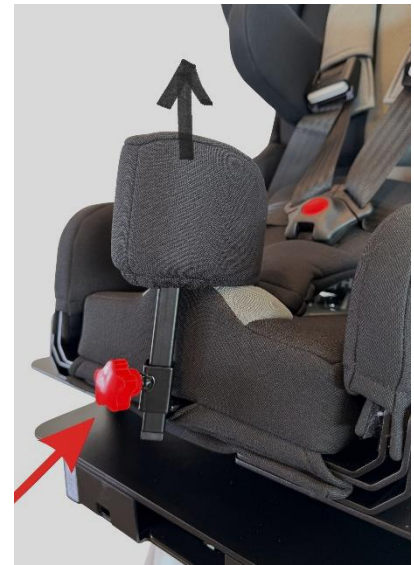
Info: If the support and safety cushion is not required, you can remove the two brackets on the right and left.



Error! Use the Home tab to apply Überschrift 1 to the text that you want to appear here Error! Use

4.3 Abduction wedge

1. The abduction wedge helps your child to maintain a certain distance between their knees.
2. The wedge should rest against the seat padding as shown in the illustration. The depth of the wedge can be adjusted. To do this, loosen the two hexagonal screws and move them under the seat.
3. The wedge should always be used while driving (if selected as an option), otherwise your child could be injured by the fastening.
4. The lever can be moved into a different position by pulling it slightly forwards without moving the screw connection. Make sure that it is at the top and not in the way, as otherwise your child's calves may come into contact with it.



4.4 seat angle adjustment

If the angle of the vehicle seat is insufficient, the angle of the car seat can be increased using the seat angle adjustment.

To do this, press the red ball (see illustration). Once the seat is in the desired position, the red ball can be locked in place by turning it.



Error! Use the Home tab to apply Überschrift 1 to the text that you want to appear here Error! Use

4.5 swivel adapter

To make it easier to transfer your child into the vehicle every day, we recommend our swivel adapter, which allows the car seat to be rotated 90° outwards. For technical reasons, only ONE direction of rotation is possible. It is possible to change to the other direction at a later date by modifying the seat. The use of an ISOFIX adapter or clamp bracket is recommended!

To rotate the seat, pull the handle upwards and move the seat at the same time. The optional footrest stops to prevent collisions with the front passenger seat and the B-pillar.

Pay attention to your child's legs when turning the seat!

After transferring your child, simply rotate the KIDSFLEX-PRO back to its original position. Listen for the "click" sound as the tongue locks back into place.



Error! Use the Home tab to apply Überschrift 1 to the text that you want to appear here Error! Use

4.6 Adjusting the leg guides

First, loosen the Velcro pad at the front lower section of the seat plate. Then lift the seat pad. Underneath, there are two slotted holes on the left and right for the leg guides. Loosen the respective screws. You can now adjust the leg guides to the desired width.

Then tighten the screws again and reattach the seat cushion.



4.7 Footrest / foot support roller

The tabs (1) are secured below the seat surface of the car seat using cylinder screws in the base mount, which also allows the depth to be adjusted.

The angle of the support bars can be adjusted by opening the quick-release levers (2). Make sure that the levers are then in a position that does not pose a risk of injury!

To adjust the height of the footrest, open the grub screws (3) on the left and right. The height can now be adjusted continuously and the grub screws can be tightened again.



Error! Use the Home tab to apply Überschrift 1 to the text that you want to appear here Error! Use

4.8 Protective mat

Position the protective mat on the car seat without blocking the recesses for the ISOFIX (if present).

Place the KIDSFLEX-PRO in the centre of the protective mat and secure it as described in chapter 4.1 **Error! Reference**



source not found. .



4.9 Connecting strap for shoulder straps

Error! Use the Home tab to apply Überschrift 1 to the text that you want to appear here Error! Use

Position the belt at the height of your child's chest. Keep a sufficient distance from the neck! To prevent the belt from slipping, the inner sides are equipped with Velcro tape. To loosen it, loosen it with your fingers.

Now adjust the width of the strap by threading it out of the slider (2) and then widening the buckle (1) accordingly.

Now secure the loose end of the belt again using the slider (2) to prevent the belt from loosening unintentionally.



Error! Use the Home tab to apply Überschrift 1 to the text that you want to appear here Error! Use

5 Warranty

HERNIK products are state-of-the-art and manufactured in accordance with strict quality standards. In the unlikely event that you have cause for complaint, HERNIK GmbH guarantees the following in accordance with its general terms and conditions after delivery:

- 24 months on the frame
- 12 months on all moving parts

No warranty can be given for custom-made products, unless this is due to manufacturing or material defects. In this case, replacement of the defective product is guaranteed for 12 months.

No guarantee can be given for parts that are subject to regular wear and tear, excessive strain or violent damage.

Claims under this warranty are subject to the device having been used properly in accordance with the instructions for use.

The warranty claim shall lapse in the event of design changes, reworking or improper repairs without prior consultation with HERNIK GmbH.

Further claims, regardless of their legal basis, in particular for compensation for direct or indirect damage, are excluded.

Error! Use the Home tab to apply Überschrift 1 to the text that you want to appear here Error! Use

6 Marking

The following labelling can be found on the back of the car seat:



Gewerbering 8
83543 Rott am Inn
Germany

KIDSFLEX^{PRO}  4260675480644

Date: 05.12.2025
SNR: KF1-PRO-2025-1000

Rückhalteeinrichtung für spezielle Anforderungen "S" (DE)

Lesen Sie bitte vor Gebrauch die Bedienungsanleitung!



Gewerbering 8
83543 Rott am Inn
Germany

KIDSFLEX^{PRO}  4260675480644

Date: 05.12.2025
SNR: KF2-PRO-2025-1000

Rückhalteeinrichtung für spezielle Anforderungen "S" (DE)

Lesen Sie bitte vor Gebrauch die Bedienungsanleitung!

Error! Use the Home tab to apply Überschrift 1 to the text that you want to appear here Error! Use



Error! Use the Home tab to apply Überschrift 1 to the text that you want to appear here Error! Use

7 Maintenance & care

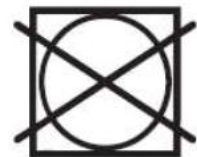
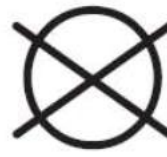
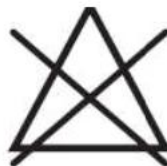
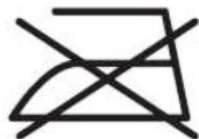
7.1 Removing the cover

The cover can be removed and washed with a mild detergent on a delicate cycle in the washing machine (30 °C). Please follow the instructions on the cover's washing label.

The plastic parts can be cleaned with soapy water. Do not use harsh cleaning agents (such as solvents).

CAUTION! The car seat must not be used without the seat cover.

1. Remove the headrest (if present) by loosening the screw.
2. Now detach the shoulder straps from the Velcro strip on the inside of the back panel.
3. The backrest padding can now be removed.
4. Now open the zip and pull off the covers.
5. For the seat cushion, first loosen the strap connection between the buckle and the seat plate.
6. Remove the seat plate, open the zip and remove the covers.



7.

Error! Use the Home tab to apply Überschrift 1 to the text that you want to appear here Error! Use

8 Technical data

	Gr. 1	Gr. 2
Scheitelhöhe	56 - 71 cm	58 - 73 cm
Rückenhöhe	33 - 48 cm	33 - 51 cm
Sitzbreite	28 cm	33 cm
Sitztiefe (einstellbar)	31 - 37 cm	36 - 42 cm
Höhe Thoraxpelotten	19 - 38 cm	24 - 43 cm
Höhe Oberkörperführungsp.	23 - 42 cm	28 - 47 cm
Abstand Thoraxpelotten/OKFP	14 - 25 cm	17 - 28 cm
Körpergröße	100 - 125 cm (max. 50 kg)	100 - 150 cm (max. 50 kg)
Gesamthöhe	71 - 86 cm	72 - 87 cm

*Some specifications may vary depending on accessories

Standard equipment:

- 5-point harness with impact pad and shoulder pads
- Standard headrest
- Adjustable seat depth
- Stepless back angle adjustment
- Thorax pads
- Shoulder guide pads
- Adjustable back
- Belt guide (mounted on the right or left)

notes

The logo for Hernik, featuring the word "Hernik" in a bold, black, sans-serif font. A red curved line arches over the top of the letters "e" and "r".

HERNIK GmbH
Gewerbering 8
83543 Rott am Inn • Germany

 +49 8039-9093930 •  +49 8039-90939319
 info@hernik.de •  www.hernik.de